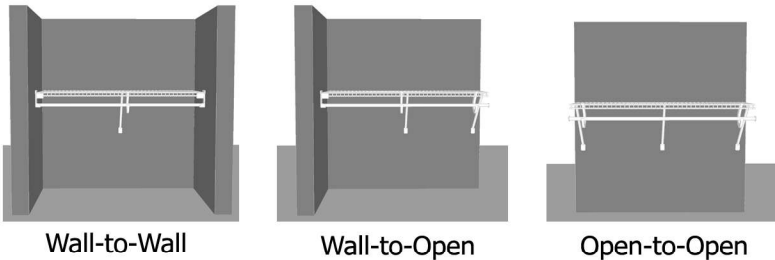


Fixed Mount Installation Tips

1. Shelf installation

There are three ways to install a shelf: Wall-to-Wall, Wall-to-Open, or Open-to-Open. Shelves are supported by wall clips and support brackets or support poles. When a shelf is attached to a side wall, a wall bracket is also used.

Choose the right hardware based on the length of the shelf and whether or not it attaches to a side wall.

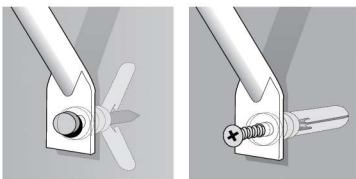


2. Use the right hardware

Drywall/ Plasterboard - Use ClosetMaid hardware with attached anchor in drywall that is 1.5cm/ 0.63" thick or less. Drill 0.63cm/ 0.25" hole, insert hardware and secure using #8 x 2.5cm/ 1" screw.

Wood Studs - Cut attached anchor off of any ClosetMaid hardware being used and secure to the wall using a #8 x 2.5cm/ 1" screw directly into the stud.

Concrete and plaster or drywall (over 1.5cm/ 0.63" thick) - Drill 0.25/ 1" hole, insert hardware with attached anchor, and secure to the wall using a #8 x 2.5cm/ 1" screw.



3. End caps

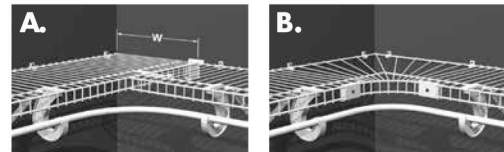
Add caps to every exposed wire on both ends of each shelf and to the ends of closet rods. End caps protect you, your clothing and the shelving materials.

Choose Your Hardware

- | | |
|----------------------------|-----------------------------|
| A Support Bracket | D Closet Rod |
| B Side Wall Bracket | E Closet Rod Support |
| C Wall Clip | F Closet Rod End Cap |
| | G Shelf End Cap |

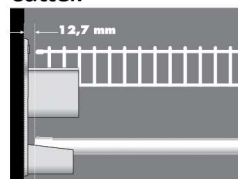
4. Corners

Butt shelves (A). Be sure to allow for the width of the full length shelf when calculating size of the other shelf. Use a corner support to connect the two shelves. Use a corner hanger bar to connect hanger bars and allow clothes to slide around corners. Or use a corner kit (B) that includes a specially designed corner shelf, corner hanger bar and installation hardware. **NOTE:** Hanger bar supports should be placed where hanger bars join.



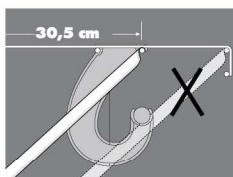
5. Measuring and cutting shelves and hanger bars

Wire shelving can be cut using boltcutters or a hacksaw. Hanger bars can be cut using a pipe cutter.



6. Using 16 in. shelving (40.6cm)

40.6cm/ 16" shelving provides additional storage capacity. It is especially good for storage of linens or boxes and stored seasonal items. Hanger bars can be installed using 40.6cm/ 16" shelving. When using 40.6cm/ 16" shelving to hang clothes, be sure to use 25.4cm/ 10" or 30.5cm/ 12" support brackets as shown so the shelf is supported properly and hangers can slide unobstructed.



7. Alternative hardware

Support poles instead of support bracket when stacking two or more shelves.